

Analytics Services

Data Management Services - Midsize

A research report comparing provider strengths,
challenges and competitive differentiators

Customized report courtesy of:



Executive Summary 03

Introduction

Definition 15
Scope of Report 16
Provider Classifications 16

Appendix

Methodology & Team 26
Author & Editor Biographies 27
About Our Company & Research 29

Data Management Services - Midsize 18 - 24

Who Should Read This Section 19
Quadrant 20
Definition & Eligibility Criteria 21
Observations 22
Provider Profiles 24

Author: Gowtham Kumar Sampath

Analytics investments in data and cloud are the cornerstones for deploying and scaling Generative AI.

The year 2022 left a marked impact on the global and U.S. analytics market with Generative AI (GenAI) and large language models (LLMs) getting unprecedented attention and playing a substantial role in driving growth. In 2023, enterprises and providers were making investments and taking initiatives to convert the GenAI hype into reality by generating the necessary momentum. This momentum, with the backdrop of enterprises increasingly relying on data-driven decision-making, further propelled the growth of the analytics market in the U.S. Ongoing economic uncertainty combined with reduced consumer activity has pushed enterprises to seek new ways of generating revenue, based on strong data-led business decisions.

According to ISG Research, 85 percent of enterprises believe that investment in GenAI in

the next 24 months is important or critical. ISG's State of Applied Generative AI Market Report details that GenAI will witness a four-phased maturation process — current adoption is still within the first two phases. In 2023, adoption has begun with knowledge management and functional process optimization, leading to product and offerings transformation (development of true AI-first products) and complete business transformation (reinvented operational models entirely built around AI).

Such developments also indicate that analytics is becoming the foundation for the successful development and implementation of GenAI use cases. Some of the use cases in which data and analytics are gaining traction include:

- Data extraction
- Contextual searches and indexes
- Virtual assistant solutions
- Predictive analytics
- Performance analytics
- Recommendation engine
- Synthetic data generation

Analytics initiatives are focused on building a **strong** **data culture** and **data literacy.**



Moreover, there is a renewed focus on data from a GenAI perspective, where it is becoming increasingly critical for business transformation and reinvention. In the past, data availability and accessibility was viewed from an analytics perspective but with GenAI, the focus has shifted to data being viewed under the lens of business value. Cybersecurity, privacy and the responsible use of data are becoming the key concerns for enterprises, driven by customer need to protect personal data.

Some of the key challenges enterprises face with analytics initiatives and projects include:

1. Recession impacting budget — no investments on new solutions or technologies
2. Deriving more value from existing analytics investments
3. Adopting the right strategies to become data-centric and evolving from being data-aware to becoming data-reliant
4. Ability to scale analytics and AI investments across an enterprise

5. Lack of a data-centric culture serves as a barrier in data democratization and monetization

The ISG Provider Lens™ Analytics Services study reveals that enterprises across the large and midmarket have different concerns and invest in varied analytics solutions in alignment with their digital and data maturity. It is imperative that enterprises engage with suitable service providers that exhibit a thorough understanding of enterprise-specific challenges and have the ability to prioritize and handle them effectively.

These challenges highlight the varied requirements of implementing AI and analytics solutions in diverse business environments, with due diligence ranging from technical aspects to organizational dynamics. Some of the key challenges identified for both large businesses and the midmarket with the analysis undertaken for the study include:

Data quality and integration

- Large Businesses: Struggling to handle extensive and diverse datasets while maintaining data quality and integrating information from various sources to ensure consistency and reliability.
- Midmarket: Limited data resources leading to data silos and the criticality of data accuracy for effective insights using analytics.

Costs and Rol

- Large Businesses: Upfront costs of acquiring and implementing advanced analytics solutions, integration expenses and the challenge of demonstrating a substantial Rol.
- Midmarket: Balancing limited budgets and cost-effective analytics solutions and demonstrating tangible value to justify the investment.

Talent and skills gap

- Large Businesses: Attracting and retaining skilled data scientists, data engineers and analysts, and building a robust analytics team with diverse expertise.

- Midmarket: Hiring specialized talent due to budget constraints and relying on existing staff to handle analytics tasks.

Data security and privacy

- Large Businesses: Navigating complex data security and compliance requirements, protecting sensitive information from breaches and ensuring adherence to regulatory standards.
- Midmarket: Addressing cybersecurity concerns with limited resources and ensuring compliance with relevant data privacy regulations.

Integration with existing systems

- Large Businesses: Ensuring seamless integration with complex existing IT infrastructures and legacy systems and avoiding disruptions in ongoing operations.
- Midmarket: Overcoming potential compatibility issues with existing software and technology to ensure a smooth integration process.



Scalability

- **Large Businesses:** Ensuring that AI and analytics solutions can scale to accommodate growing data volumes, expanding business needs and increasing user demands.
- **Midmarket:** Balancing the need for scalable solutions with current business size and future growth projections and avoiding overinvestment or underinvestment.

Change management

- **Large Businesses:** Managing resistance to change and ensuring effective adoption of analytics tools by employees at various levels.
- **Midmarket:** Adapting to new analytics processes and tools with a small workforce and ensuring a smooth transition through effective change management.

Understanding business needs

- **Large Businesses:** Aligning AI and analytics solutions with diverse business units and varied operational requirements, ensuring relevance and usability across an organization.
- **Midmarket:** Defining and understanding specific business needs to avoid overinvestment in or underutilization of analytics tools and ensuring targeted benefits.

Real-time analytics

- **Large Businesses:** Implementing real-time AI and analytics solutions for timely decision-making in a complex organizational structure, which involves managing data streams efficiently.
- **Midmarket:** Navigating the challenge of using real-time analytics with limited resources and infrastructure and dealing with the need for timely insights.

Vendor selection

- **Large Businesses:** Evaluating and selecting from myriad complex and feature-rich AI and analytics solutions by considering factors such as scalability, integration capabilities and available vendor support.
- **Midmarket:** Choosing solutions that are cost-effective, user-friendly and aligned with a business's scale and needs and making informed decisions with limited resources.

The 2023 study has also identified specific challenges that enterprises face in implementing data science, data engineering and data management services. Some of the key aspects are highlighted below.

Challenges related to data science services:

- **Interpretation:** Data science models, especially the ones based on complex algorithms such as deep learning may make interpretation a challenge. Enterprises continue to face difficulties in understanding and justifying the decisions made by these models — a concern in regulated industries where transparency is critical.

- **Governance and Ethical Considerations:**

Enterprises struggle to address governance and ethical considerations related to data science. This includes compliance with data protection regulations, ethical use of data and mitigation of biases or discrimination in algorithms — concerns factors that require proper governance frameworks.

Enterprises investing in data modernization and data engineering services are faced with the following challenges:

- **Data Integration and ETL Processes:**

Enterprises continue to grapple with the challenge of integrating diverse data sources and undertaking extract, transform and load (ETL) processes. With the increasing volume and variety of data, organizations need to ensure seamless data ingestion, transformation and consolidation. This includes addressing issues related to data quality, schema mapping, data compatibility and handling real-time or streaming data.

- **Scalability and Performance:** In 2023, enterprises face the challenge of scaling their data engineering infrastructure to



handle the growing volume of data. With continued data explosion, organizations must ensure that their systems have the ability to handle the increased workload efficiently. This involves designing scalable architectures, optimizing data processing pipelines, leveraging distributed computing frameworks and utilizing cloud-based technologies for elastic scalability.

- **Real-time Data Processing:** The demand for real-time analytics and insights continues to rise in 2023. Enterprises face challenges in processing and analyzing streaming data in real-time for timely decision-making and action. Building efficient real-time data pipelines, leveraging technologies such as Apache Kafka or Apache Flink, and implementing event-driven architectures are important considerations for data engineering in the era of real-time analytics.
- **Automation and Orchestration:** Automating data engineering processes and orchestrating workflows are vital to improve efficiency and reduce manual efforts. In 2023, enterprises have to deal with the challenge of streamlining data

engineering tasks such as scheduling data pipelines, managing dependencies and automating data quality checks. Adopting workflow management tools, leveraging data orchestration frameworks and implementing DevOps practices are relevant in addressing this challenge.

- **Cloud Migration and Hybrid Environments:** As an increasing number of organizations adopt cloud technologies, enterprises face the challenge of migrating their data infrastructure to the cloud while managing hybrid environments. They must address issues related to data integration, data movement across on-premises and cloud systems, optimizing costs and leveraging the benefits of cloud services for data engineering workloads.
- **Data Quality and Master Data Management:** Ensuring data quality and managing master data effectively are ongoing challenges for enterprises. In 2023, organizations must address issues

Challenges related to data management and data governance services:

related to data consistency, accuracy, completeness and timeliness. Establishing data quality frameworks, implementing data profiling and cleansing processes, and employing master data management strategies are crucial for reliable data engineering practices.

- **Data Lineage and Metadata Management:** Understanding the origin and lineage of data, as well as managing metadata, is essential in 2023. Enterprises face challenges in documenting and tracking the flow of data across various systems and processes. Implementing data lineage tracking mechanisms, capturing metadata information and maintaining data catalogs or metadata repositories are key considerations for effective data engineering practices.
- **Data Collaboration and DataOps:** Collaboration among different teams working with data such as data scientists, analysts and business users is crucial for success. In 2023, organizations must address the challenge of fostering collaboration, enabling self-service data

access and implementing DataOps practices. This includes creating data catalogs, providing data discovery platforms and facilitating seamless collaboration and knowledge sharing.

The absence of specific federal legal frameworks on AI in the U.S. has led to legislative and agency efforts at both federal and state levels to regulate the use of AI. These are detailed below:

- **American Data Privacy and Protection Act (ADPPA):** The ADPPA is one of the proposed laws addressing AI regulation. While it primarily focuses on data privacy and protection, it includes provisions on the use of algorithms. The bill requires impact assessments for algorithms used in decision-making that represent an elevated risk to individuals. The act reflects a growing concern about the potential negative impacts of AI-based systems on individuals and the need for accountability.



- **Algorithmic Accountability Act of 2022 (AAA):**

The AAA is another proposed law that specifically addresses algorithmic accountability. It emphasizes the need for assessing their impact, particularly the ones used in decision-making processes that can significantly affect individuals.

This legislative effort underscores the recognition that algorithms, including the ones powered by AI, can have profound consequences and their deployment should be subject to scrutiny and accountability.

- **State-level Consumer Privacy Laws:**

In the absence of comprehensive federal legislation, individual states have taken steps to enact consumer privacy laws that regulate the collection, use and disclosure of personal data.

These state laws often include provisions related to automated decision-making, explicitly addressing AI systems in contexts such as housing, credit, employment and criminal justice. They focus on ensuring

fairness and transparency in the use of algorithms for critical decisions that impact individuals.

Both the ADPPA and AAA emphasize the need for impact assessments, signaling a shift toward proactive measures to evaluate and mitigate the potential risks associated with AI-based systems. The focus on impact assessments aligns with broader global discussions on responsible AI deployment, transparency and ethical considerations surrounding algorithmic decision-making.


While the U.S does not yet have a comprehensive federal legal framework specific to AI regulation, the legislative efforts at federal and state levels indicate a growing recognition of the importance of addressing the challenges and risks associated with, particularly related to decision-making.

Notes on quadrant positioning: In this study, several data analytics service providers that offer similar portfolio attractiveness in most quadrants have been assessed. This reflects the relative maturity of the market, providers and offerings. It is a given that not all are equal

in circumstances. The vertical axis positioning in each quadrant reflects ISG's analysis of how well the offerings align with the full scope of enterprise needs. The market has also been segmented into Large, Mid-market and Specialists to showcase the varying analytics requirements of enterprises based on their size, scale and industry dynamics. It also reflects providers' strategy to align their portfolio and offerings to suit market demands and enterprise needs.


Service providers rely on data-centric principles to provide unified, industrialized, cost-efficient and innovative data platforms for better decision-making. This includes using a domain-driven architecture, treating data as a product, creating data marketplaces and ensuring flexibility in to adapting to market changes – in short, fostering an environment that values data and uses it strategically.



 Provider Positioning


	Data Science Services - Large	Data Science Services - Midsize	Data Science Services - Specialist	Data Engineering Services - Large	Data Engineering Services - Midsize	Data Engineering Services - Specialist	Data Management Services - Large	Data Management Services - Midsize
Accenture	Leader	Not In	Not In	Leader	Not In	Not In	Leader	Not In
Analytics8	Not In	Not In	Contender	Not In	Not In	Product Challenger	Not In	Not In
Apexon	Not In	Leader	Not In	Not In	Leader	Not In	Not In	Leader
Atos	Product Challenger	Not In	Not In	Product Challenger	Not In	Not In	Product Challenger	Not In
Birlasoft	Not In	Product Challenger	Not In	Not In	Product Challenger	Not In	Not In	Product Challenger
Brillio	Not In	Leader	Not In	Not In	Product Challenger	Not In	Not In	Product Challenger
Capgemini	Leader	Not In	Not In	Leader	Not In	Not In	Leader	Not In
CGI	Product Challenger	Not In	Not In	Contender	Not In	Not In	Contender	Not In
Cigniti	Not In	Product Challenger	Not In	Not In	Contender	Not In	Not In	Product Challenger



 Provider Positioning


	Data Science Services - Large	Data Science Services - Midsize	Data Science Services - Specialist	Data Engineering Services - Large	Data Engineering Services - Midsize	Data Engineering Services - Specialist	Data Management Services - Large	Data Management Services - Midsize
Cognizant	Leader	Not In	Not In	Leader	Not In	Not In	Leader	Not In
Deloitte	Leader	Not In	Not In	Leader	Not In	Not In	Leader	Not In
DXC Technology	Product Challenger	Not In	Not In	Product Challenger	Not In	Not In	Product Challenger	Not In
Encora	Not In	Leader	Not In	Not In	Leader	Not In	Not In	Product Challenger
EPAM Systems	Contender	Not In	Not In	Contender	Not In	Not In	Contender	Not In
EXL	Contender	Not In	Not In	Contender	Not In	Not In	Contender	Not In
EY	Market Challenger	Not In	Not In	Market Challenger	Not In	Not In	Market Challenger	Not In
Factspan	Not In	Not In	Product Challenger	Not In	Not In	Product Challenger	Not In	Not In
Fractal	Not In	Not In	Leader	Not In	Not In	Leader	Not In	Not In



 Provider Positioning


	Data Science Services - Large	Data Science Services - Midsize	Data Science Services - Specialist	Data Engineering Services - Large	Data Engineering Services - Midsize	Data Engineering Services - Specialist	Data Management Services - Large	Data Management Services - Midsize
Genpact	Leader	Not In	Not In	Leader	Not In	Not In	Leader	Not In
Grazitti Interactive	Not In	Contender	Not In	Not In	Contender	Not In	Not In	Contender
HARMAN DTS	Not In	Leader	Not In	Not In	Leader	Not In	Not In	Leader
HCLTech	Leader	Not In	Not In	Leader	Not In	Not In	Leader	Not In
Hexaware	Not In	Leader	Not In	Not In	Leader	Not In	Not In	Leader
Hitachi Digital Services	Contender	Not In	Not In	Product Challenger	Not In	Not In	Product Challenger	Not In
HTC Global Services	Not In	Product Challenger	Not In	Not In	Leader	Not In	Not In	Leader
IBM	Market Challenger	Not In	Not In	Market Challenger	Not In	Not In	Market Challenger	Not In
Impetus Technologies	Not In	Not In	Product Challenger	Not In	Not In	Leader	Not In	Not In



 Provider Positioning


	Data Science Services - Large	Data Science Services - Midsize	Data Science Services - Specialist	Data Engineering Services - Large	Data Engineering Services - Midsize	Data Engineering Services - Specialist	Data Management Services - Large	Data Management Services - Midsize
InData Labs	Not In	Not In	Contender	Not In	Not In	Contender	Not In	Not In
Indium Software	Not In	Product Challenger	Not In	Not In	Product Challenger	Not In	Not In	Contender
Infogain	Not In	Leader	Not In	Not In	Leader	Not In	Not In	Leader
Infosys	Leader	Not In	Not In	Leader	Not In	Not In	Leader	Not In
ITC Infotech	Not In	Product Challenger	Not In	Not In	Product Challenger	Not In	Not In	Contender
KPMG	Market Challenger	Not In	Not In	Market Challenger	Not In	Not In	Market Challenger	Not In
Kyndryl	Product Challenger	Not In	Not In	Product Challenger	Not In	Not In	Product Challenger	Not In
LatentView Analytics	Not In	Not In	Product Challenger	Not In	Not In	Product Challenger	Not In	Not In
LTIMindtree	Product Challenger	Not In	Not In	Product Challenger	Not In	Not In	Product Challenger	Not In



 Provider Positioning


	Data Science Services - Large	Data Science Services - Midsize	Data Science Services - Specialist	Data Engineering Services - Large	Data Engineering Services - Midsize	Data Engineering Services - Specialist	Data Management Services - Large	Data Management Services - Midsize
Marlabs	Not In	Contender	Not In	Not In	Contender	Not In	Not In	Contender
MathCo	Not In	Not In	Leader	Not In	Not In	Leader	Not In	Not In
Mphasis	Not In	Leader	Not In	Not In	Leader	Not In	Not In	Leader
Mu Sigma	Not In	Not In	Market Challenger	Not In	Not In	Market Challenger	Not In	Not In
N-iX	Not In	Not In	Contender	Not In	Not In	Contender	Not In	Not In
NTT DATA	Rising Star ★	Not In	Not In	Rising Star ★	Not In	Not In	Rising Star ★	Not In
Persistent Systems	Not In	Leader	Not In	Not In	Leader	Not In	Not In	Leader
PwC	Market Challenger	Not In	Not In	Market Challenger	Not In	Not In	Market Challenger	Not In
Quantiphi	Not In	Not In	Leader	Not In	Not In	Leader	Not In	Not In



 Provider Positioning

	Data Science Services - Large	Data Science Services - Midsize	Data Science Services - Specialist	Data Engineering Services - Large	Data Engineering Services - Midsize	Data Engineering Services - Specialist	Data Management Services - Large	Data Management Services - Midsize
Rackspace Technology	Not In	Contender	Not In	Not In	Contender	Not In	Not In	Contender
SG Analytics	Not In	Not In	Contender	Not In	Not In	Contender	Not In	Not In
Sigmoid	Not In	Not In	Rising Star ★	Not In	Not In	Rising Star ★	Not In	Not In
SLK Group	Not In	Product Challenger	Not In	Not In	Product Challenger	Not In	Not In	Product Challenger
TCS	Leader	Not In	Not In	Leader	Not In	Not In	Leader	Not In
Tech Mahindra	Leader	Not In	Not In	Leader	Not In	Not In	Leader	Not In
ThirdEye Data	Not In	Not In	Contender	Not In	Not In	Contender	Not In	Not In
Tiger Analytics	Not In	Not In	Leader	Not In	Not In	Leader	Not In	Not In
Tredence	Not In	Not In	Leader	Not In	Not In	Leader	Not In	Not In



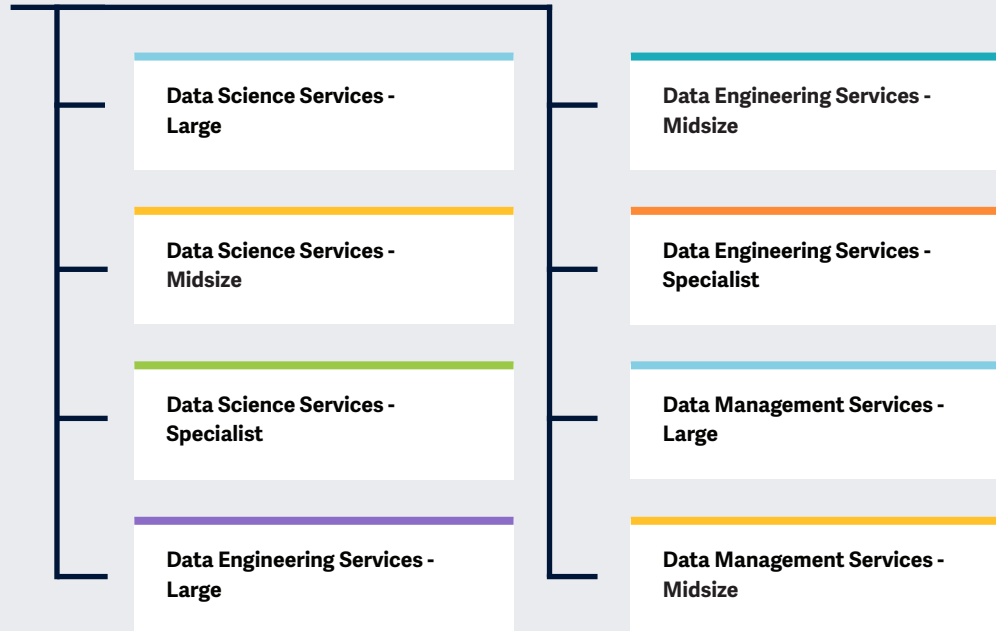
 Provider Positioning

	Data Science Services - Large	Data Science Services - Midsize	Data Science Services - Specialist	Data Engineering Services - Large	Data Engineering Services - Midsize	Data Engineering Services - Specialist	Data Management Services - Large	Data Management Services - Midsize
Trianz	Not In	Rising Star ★	Not In	Not In	Rising Star ★	Not In	Not In	Rising Star ★
UST	Contender	Leader	Not In	Contender	Leader	Not In	Contender	Leader
Virtusa	Not In	Leader	Not In	Not In	Leader	Not In	Not In	Leader
Visionet	Not In	Contender	Not In	Not In	Product Challenger	Not In	Not In	Product Challenger
Wipro	Leader	Not In	Not In	Leader	Not In	Not In	Leader	Not In
WNS	Not In	Market Challenger	Not In	Not In	Market Challenger	Not In	Not In	Market Challenger
Zensar Technologies	Not In	Product Challenger	Not In	Not In	Product Challenger	Not In	Not In	Product Challenger
ZS	Not In	Not In	Leader	Not In	Not In	Product Challenger	Not In	Not In



The report provides insights into the **evolving market trends** and **competitive dynamics** among providers of Analytics Services in 2023.

Simplified Illustration Source: 2023



Definition

The year 2023 continues to witness economic headwinds with increased inflation, while the global economy exhibits signs of resilience, with enterprises becoming cautious about IT transformation expenditure. This scenario is further complicated by increased hyper competition among enterprises and tech-savvy startups and consumers' hyperpersonalization needs. With enterprise budgets strapped, business leaders show more value for their existing investments in digital technologies and focus on enhancing CX, cost optimization and cybersecurity to ensure business and operational resilience. ISG analysis reveals that this is an opportune time for enterprises to revisit their analytics strategies and increase spending on analytics services and solutions to enhance data-driven approaches and solve business challenges. Data science services are gaining significant traction, aligning business objectives with underlying data and helping enterprises derive decision intelligence and evaluate business impact. Enterprises expect providers to identify relevant business use cases, offer AI and ML modeling platforms



and engineering capabilities, and deploy these models to production. Data engineering services are in demand owing to several cloud migrations and data modernization investments. The focus will be on achieving high cost and process efficiency optimization levels with traction for FinOps, DataOps and DevSecOps. Data management services are making a significant comeback, with data governance capabilities in demand. Enterprises compete for providers with capabilities in data catalog, data observability, data lineage and business glossary, among other areas that ensure data trustworthiness and availability.

Scope of the Report

This ISG Provider Lens™ quadrant report covers the following eight (spell out the number of quadrants, do not use a digit) quadrants for services/solutions: Data Science Services – Large, Data Science Services – Midsize, Data Science Services – Specialists, Data Engineering Services – Large, Data Engineering Services – Midsize, Data Engineering Services – Specialists, Data Management Services – Large, and Data Management Services – Midsize.

This ISG Provider Lens™ study offers IT decision-makers:

- Transparency on the strengths and weaknesses of relevant providers/software vendors
- A differentiated positioning of providers by segments (quadrants)
- Focus on the regional market

Our study serves as the basis for important decision-making by covering providers' positioning, key relationships and go-to-market considerations. ISG advisors and enterprise

clients also use information from these reports to evaluate their existing vendor relationships and potential engagements.

Provider Classifications

The provider position reflects the suitability of providers for a defined market segment (quadrant). Without further additions, the position always applies to all company sizes classes and industries. In case the service requirements from enterprise customers differ and the spectrum of providers operating in the local market is sufficiently wide, a further differentiation of the providers by performance is made according to the target group for products and services. In doing so, ISG either considers the industry requirements or the number of employees, as well as the corporate structures of customers and positions providers according to their focus area. As a result, ISG differentiates them, if necessary, into two client target groups that are defined as follows:

- **Midmarket:** Companies with 100 to 4,999 employees or revenues between \$20 million and \$999 million with central headquarters in the respective country, usually privately owned.

- **Large Accounts:** Multinational companies with more than 5,000 employees or revenue above \$1 billion, with activities worldwide and globally distributed decision-making structures.

The ISG Provider Lens™ quadrants are created using an evaluation matrix containing four segments (Leader, Product & Market Challenger and Contender), and the providers are positioned accordingly. Each ISG Provider Lens™ quadrant may include a service provider(s) which ISG believes has strong potential to move into the Leader quadrant. This type of provider can be classified as a Rising Star.

- **Number of providers in each quadrant:** ISG rates and positions the most relevant providers according to the scope of the report for each quadrant and limits the maximum of providers per quadrant to 25 (exceptions are possible).





Provider Classifications: Quadrant Key

Product Challengers offer a product and service portfolio that reflect excellent service and technology stacks. These providers and vendors deliver an unmatched broad and deep range of capabilities. They show evidence of investing to enhance their market presence and competitive strengths.

Leaders have a comprehensive product and service offering, a strong market presence and established competitive position. The product portfolios and competitive strategies of Leaders are strongly positioned to win business in the markets covered by the study. The Leaders also represent innovative strength and competitive stability.

Contenders offer services and products meeting the evaluation criteria that qualifies them to be included in the IPL quadrant. These promising service providers or vendors show evidence of rapidly investing in products/ services and a follow sensible market approach with a goal of becoming a Product or Market Challenger within 12 to 18 months.

Market Challengers have a strong presence in the market and offer a significant edge over other vendors and providers based on competitive strength. Often, Market Challengers are the established and well-known vendors in the regions or vertical markets covered in the study.

★ **Rising Stars** have promising portfolios or the market experience to become a Leader, including the required roadmap and adequate focus on key market trends and customer requirements. Rising Stars also have excellent management and understanding of the local market in the studied region. These vendors and service providers give evidence of significant progress toward their goals in the last 12 months. ISG expects Rising Stars to reach the Leader quadrant within the next 12 to 24 months if they continue their delivery of above-average market impact and strength of innovation.

Not in means the service provider or vendor was not included in this quadrant. Among the possible reasons for this designation: ISG could not obtain enough information to position the company; the company does not provide the relevant service or solution as defined for each quadrant of a study; or the company did not meet the eligibility criteria for the study quadrant. Omission from the quadrant does not imply that the service provider or vendor does not offer or plan to offer this service or solution.





Data Management Services - Midsize

Who Should Read This Section

In this quadrant, ISG assesses data management service providers in the U.S. It also highlights the changing dynamics of the data management services market in the region and how providers support end-to-end storage, management and governance of data for enterprise clients by adhering to relevant compliance guidelines and standards.

Enterprises need to manage data from multiple sources and the accuracy of this data is critical for timely business insights and decision-making in compliance with regulatory guidelines. To this end, they are seeking solutions that can help overcome issues such as poor data quality and inconsistencies, and data silos.

Enterprises are collaborating with providers with capabilities in master data management to establish a single source of truth for accurate insights. Service providers should leverage AI and ML and offer relevant frameworks, accelerators and templates for data quality and data governance in keeping with the requirements of enterprises.



IT Leaders should read this report to understand the relative positioning and capabilities of providers that can help them effectively plan and improve the reliability and availability of their business.



Chief Data Officers can refer to this report to gain a perspective on effective analytics tools and techniques to deliver business outcomes from data assets and ecosystems.



Chief Digital Officers responsible for strategizing a digital approach can gain a better perspective on effective analytics tools and techniques for frictionless transactions in a virtual environment.

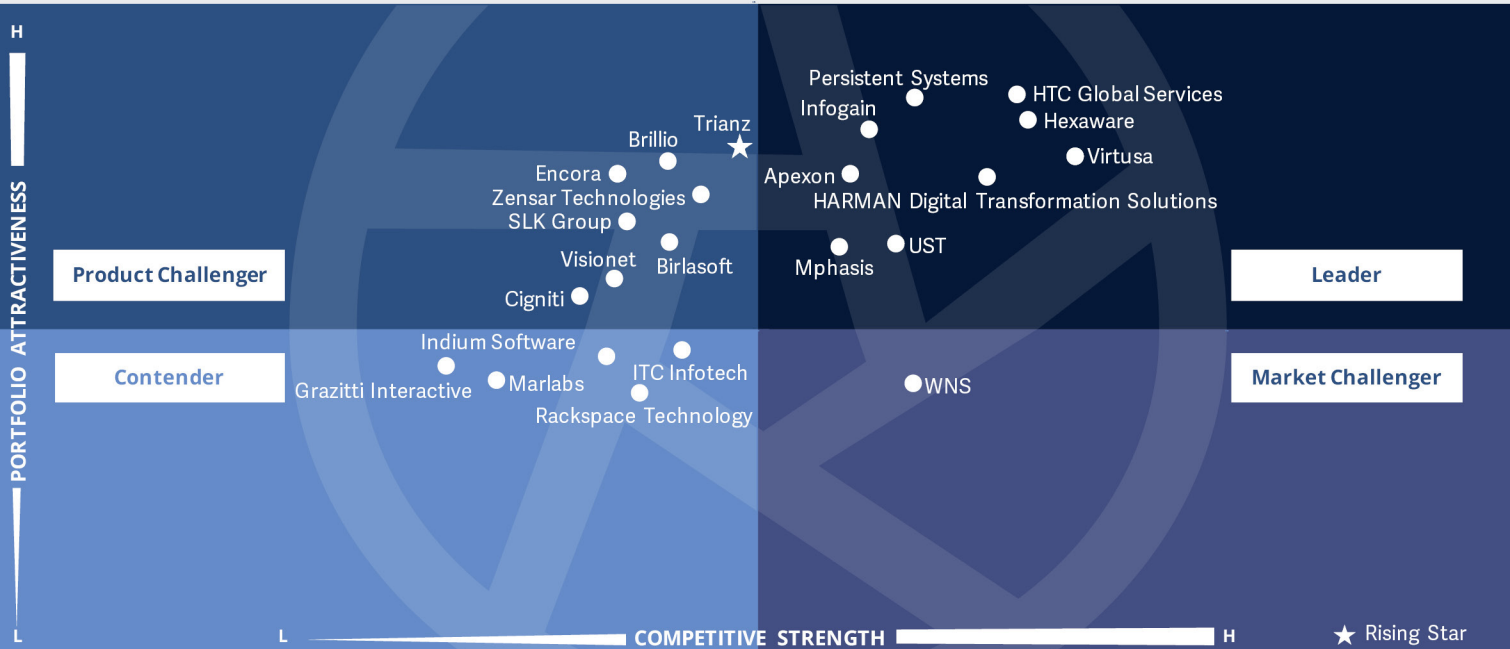


Data Management Professionals should read this report to understand the relative positioning and capabilities of providers that can help in implementing and maintaining compliance and governance standards.



Analytics Services
Data Management Services - Midsize

U.S. 2023



This quadrant assesses providers that offer **master data management, metadata management, data migration and data lineage** services, in addition to providing **data quality, data security and control**, compliance and creation and management of data lakes.

Gowtham Kumar Sampath



Data Management Services - Midsize

Definition

In this quadrant, ISG assesses service providers in the data management services category that are capable of managing end-to-end storage, sharing, archiving and data retrieval by adhering to relevant compliance guidelines. Providers should offer consulting capabilities that include, but are not restricted to, assessment, strategy development and roadmap creation. These capabilities should also include assistance for planning, designing and deploying data management services. Providers should help enterprises in organizing and cataloging data from different sources. Offerings from service providers include, but are not limited to, workflow management, data modeling, data integration, master data management, metadata management, data migration and data lineage services as part of the data management services. Providers should also possess the self-service capability to make data available for stakeholders to be consumed in a simple format. Providers should set data governance strategies to ensure regulatory compliance standards are met. They should also be able to develop and implement

data governance systems and policies and procedures for effective and efficient data management. The quadrant encompasses services for ensuring data quality, data security and control, complying with GDPR, and creating and managing data lakes, among others.

Eligibility Criteria

1. Offer **consulting expertise for assessment, strategy and roadmap**, along with **lifecycle and workflow management**
2. Possess the capability to **manage and govern data by establishing trust and adhering to relevant compliance guidelines**
3. Encompass the ability to **develop data architecture and offer data modeling**
4. Offer data integration, **data migration, master data management and metadata management** capabilities as part of data management services
5. Provide **data cataloging** from disparate sources, **data stewardship and business glossaries**, along with **maintaining and controlling data quality** and providing **data security**
6. Track **data lineage** back to the data origin
7. Offer **regulatory compliances** such as GDPR
8. Possess experience in **establishing CoEs** as part of the services offering



Data Management Services - Midsize

Observations

In the midmarket landscape, enterprises are prioritizing data security and compliance, with several providers offering advanced tools for auditing and monitoring data to enhance security. Providers with cloud expertise are playing a pivotal role in fortifying businesses with multilayered security strategies to counter advanced security threats, where offerings are based on the foundation of compliance and robust data governance, and that emphasize the importance of trustworthiness and privacy, to ensure data accuracy for business users. This comprehensive approach involves rigorous risk assessment and other evaluations, enabling rapid threat detection and mitigation.

Providers are also taking strategic, tailored approaches for regional enterprises navigating the complexities of data localization laws, ensuring efficient storage and processing of data while maintaining optimal performance and availability. Providers specialize in tailoring data governance for enterprises, covering key aspects such as data capture, storage, processing and sharing.

Investments are directed toward leveraging AI for detecting security threats, ensuring compliance and interpreting regulatory documents and contracts for the benefit of organizations across sectors. Providers are also investing in developing industry-wide frameworks that often incorporate elements such as ethical AI assessments, discovery processes and MLOps maturity assessments, aimed at ensuring the ethical deployment of AI and safeguarding enterprises from potential harm.

From the 105 companies assessed for this study, 22 qualified for this quadrant, with 9 being Leaders and one Rising Star.



Apexon is focused on data integrity, confidentiality, availability and compliance with regulations in all its operations. Its offerings implement data quality checks and cleansing processes to ensure data accuracy and reliability.



HARMAN DTS helps enterprises foster data literacy across an enterprise when implementing data-related initiatives and helps ensure smooth change management by empowering employees to become more data-driven and make better-informed decisions.



Hexaware establishes compliance frameworks aligned with industry standards and regulations, ensuring appropriate data handling practices by defining data quality metrics, implementing data cleansing techniques and establishing data profiling and monitoring procedures.



HTC Global Services leverages AI-powered tools to track data use, monitor changes and ensure compliance with regulatory requirements and automated audits, using AI to significantly provide momentum to the process of identifying discrepancies or non-compliance issues.



Infogain

Infogain helps enterprises adopt a decentralized approach to data management, emphasizing on democratization, data fabric and data mesh, while connecting everyone in an organization responsible for data use and quality and improving data access, literacy and culture.



Mphasis offers a well-defined data governance framework, powered by open-source tools that help enterprises gain data governance maturity by addressing people, processes, practices, technologies, security and organizational culture challenges.



Persistent Systems assists clients in establishing a data stewardship program to ensure the effective management of data assets. This includes defining data steward roles, responsibilities and workflows, and establishing data governance committees and councils.



UST Global's data governance committee and advanced technologies manage critical initiatives and ensure efficient data management with employee training fostering a culture of responsible data handling and offering reliable, secure and compliant data solutions.

virtusa

Virtusa offers a robust data governance framework that goes beyond compliance and risk management to help unlock insights and deliver differentiated CX, where it leverages its partnerships with IBM, Oracle and Microsoft, among others.



Trianz (Rising Star) has an expansive partner ecosystem for data and analytics, spanning integration, storage, BI, advanced analytics, MDM and big data. It also has a strong association with external partners to fulfill project-specific enterprise requirements.



Infogain



"Infogain's data platform modernization services help enterprises realize their data vision, ranging from envisioning a data platform strategy to architecting and building a modern, future-ready cloud data platform."

Gowtham Kumar Sampath

Overview

Infogain is headquartered in California, U.S. and operates in eight countries. It has more than 6,000 employees across 17 global offices. Infogain's analytics, data science and AI services provide capabilities, accelerators, and ready-to-use solutions that include generative AI, NAVIK AI solutions, marketing analytics, customer analytics, market research, and data science predictive AI and ML. Infogain's data modernization services, such as DataOps modernization and data platform modernization, provide capabilities for making strategic and tactical decisions that are driven by data and insights.

Strengths

Cloud-led security solutions: Infogain's Cloud SecOps platform incorporates built-in governance mechanisms, encompassing profiling, MDM, data quality, metadata classification, data cataloging and data lineage capture. Infogain's cloud experts secure businesses by fortifying cloud environments against contemporary security threats. The approach involves risk assessment, evaluation and deploying multilayered security strategies, facilitating rapid threat detection and mitigation.

Robust governance approach: Infogain helps enterprises establish a data governance council featuring organizational leadership for oversight and alignment with strategic goals. The approach includes training programs to instill data governance principles

and emphasizes the significance of data quality, security and compliance in daily data practices. Key performance metrics are set up to gauge the effectiveness of data governance practices and their influence on data literacy and decision-making.

End-to-end governance offerings: Infogain combines data governance, change management and data literacy to ensure secure and high-quality data handling. This integration leverages change management methodologies to promote adopting data governance practices, highlighting their role in improving data literacy efforts and driving positive transformations.

Caution

Infogain should provide comprehensive data regarding the quantifiable results and tangible benefits derived from its data management references and case studies, with a particular focus on data cataloging, data literacy and data quality.

The company should further promote its thought leadership on utilizing AI and ML in data management and governance.





Appendix

The ISG Provider Lens™ 2023 – Analytics Services research study analyzes the relevant software vendors/service providers in the U.S. market, based on a multi-phased research and analysis process, and positions these providers based on the ISG Research methodology.

Lead Author:

Gowtham Kumar Sampath

Editor:

Ipshita Sengupta

Research Analyst:

Vartika Rai

Data Analyst:

Laxmi Sahebrao Kadve

Consultant Advisors

Dries Ballerstedt, Diwahar Jawahar, Dorotea Baljevic, Vishal Srivastava, Ritwik Dey and Olga Kupriyanova

Project Manager:

Yeshashwi Nagarajan C

Information Services Group Inc. is solely responsible for the content of this report. Unless otherwise cited, all content, including illustrations, research, conclusions, assertions and positions contained in this report were developed by, and are the sole property of Information Services Group Inc.

The research and analysis presented in this report includes research from the ISG Provider Lens program, ongoing ISG Research programs, interviews with ISG advisors, briefings with services providers and analysis of publicly available market information from multiple sources. The data collected for this report represents information that ISG believes to be current as of November 2023, for providers who actively participated as well as for providers who did not. ISG recognizes that many mergers and acquisitions have taken place since that time, but those changes are not reflected in this report.

All revenue references are in U.S. dollars (\$US) unless noted.

The study was divided into the following steps:

1. Definition of Analytics Services market
2. Use of questionnaire-based surveys of service providers/ vendor across all trend topics
3. Interactive discussions with service providers/vendors on capabilities & use cases
4. Leverage ISG's internal databases & advisor knowledge & experience (wherever applicable)
5. Use of Star of Excellence CX-Data
6. Detailed analysis & evaluation of services & service documentation based on the facts & figures received from providers & other sources.
7. Use of the following key evaluation criteria:
 - * Strategy & vision
 - * Tech Innovation
 - * Brand awareness and presence in the market
 - * Sales and partner landscape
 - * Breadth and depth of portfolio of services offered
 - * CX and Recommendation



Author & Editor Biographies

Lead Analyst



Gowtham Kumar Sampath
Assistant Director and Principal Analyst

Gowtham Sampath is a Assistant Director and Principal Analyst with ISG Research, responsible for authoring ISG Provider Lens™ quadrant reports for Banking Technology/Platforms, Digital Banking Services, Cybersecurity and Analytics Solutions & Services market. With 15 years of market research experience, Gowtham works on analyzing and bridging the gap between data analytics providers and businesses, addressing market opportunities and best practices. In his role, he works with advisors in addressing enterprise clients' requests for ad-hoc research requirements within the IT services sector, across industries.

Furthermore, he authors thought leadership research, whitepapers, articles on emerging technologies within the banking sector in the areas of automation, DX and UX experience as well as the impact of data analytics across different industry verticals.

Research Analyst



Vartika Rai
Research Analyst

Vartika Rai is a research analyst at ISG and is responsible for supporting and co-authoring Provider Lens™ studies on Analytics Services, and SAP Ecosystem. She supports the lead analysts in the research process and authors the global summary report. Vartika also develops content from an enterprise perspective and collaborates with advisors and enterprise clients on ad-hoc research assignments. Vartika started her current role in June 2022. Before this role, she worked on secondary research, competitive intelligence, market trends, and newsletter analysis.





IPL Product Owner

Jan Erik Aase
Partner and Global Head – ISG Provider Lens™

Mr. Aase brings extensive experience in the implementation and research of service integration and management of both IT and business processes. With over 35 years of experience, he is highly skilled at analyzing vendor governance trends and methodologies, identifying inefficiencies in current processes, and advising the industry. Jan Erik has experience on all four sides of the sourcing and vendor governance lifecycle - as a client, an industry analyst, a service provider and an advisor.

Now as a partner and global head of ISG Provider Lens™, he is very well positioned to assess and report on the state of the industry and make recommendations for both enterprises and service provider clients.



***ISG** Provider Lens™

The ISG Provider Lens™ Quadrant research series is the only service provider evaluation of its kind to combine empirical, data-driven research and market analysis with the real-world experience and observations of ISG's global advisory team. Enterprises will find a wealth of detailed data and market analysis to help guide their selection of appropriate sourcing partners, while ISG advisors use the reports to validate their own market knowledge and make recommendations to ISG's enterprise clients. The research currently covers providers offering their services across multiple geographies globally.

For more information about ISG Provider Lens™ research, please visit this [webpage](#).

***ISG** Research™

ISG Research™ provides subscription research, advisory consulting and executive event services focused on market trends and disruptive technologies driving change in business computing. ISG Research™ delivers guidance that helps businesses accelerate growth and create more value.

ISG offers research specifically about providers to state and local governments (including counties, cities) as well as higher education institutions. Visit: [Public Sector](#).

For more information about ISG Research™ subscriptions, please email contact@isg-one.com, call +1.203.454.3900, or visit research.isg-one.com.

***ISG**

ISG (Information Services Group) (Nasdaq: III) is a leading global technology research and advisory firm. A trusted business partner to more than 900 clients, including more than 75 of the world's top 100 enterprises, ISG is committed to helping corporations, public sector organizations, and service and technology providers achieve operational excellence and faster growth. The firm specializes in digital transformation services, including automation, cloud and data analytics; sourcing advisory; managed governance and risk services; network carrier services; strategy and operations design; change management; market intelligence and technology research and analysis.

Founded in 2006, and based in Stamford, Conn., ISG employs more than 1,600 digital-ready professionals operating in more than 20 countries—a global team known for its innovative thinking, market influence, deep industry and technology expertise, and world-class research and analytical capabilities based on the industry's most comprehensive marketplace data.

For more information, visit isg-one.com.





DECEMBER, 2023

REPORT: ANALYTICS SERVICES